

**BARDONS & OLIVER**

# The Reliable Outsource

Machining of complex, precision parts  
up to a 7-foot cube and 14,000 pounds

Vertical turning capacity from  
30" to 84" diameter

Horizontal turning capacity up  
to 36" diameter and 144" long

Complete inspection and  
assembly services

ISO Certified



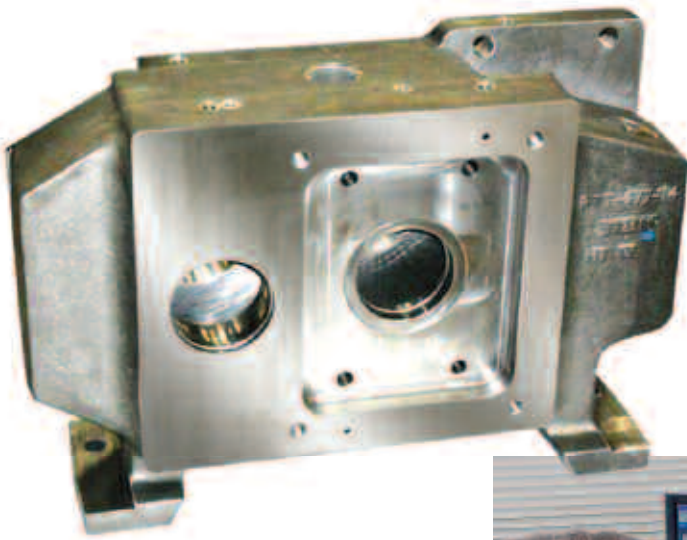
# We deliver more than you expect.



## Over 120 years of excellence.

Bardons & Oliver is located in a 100,000 square foot, state-of-the-art production facility in Solon, Ohio. In the heart of the industrial midwest, we have worked with many outstanding local sources for castings, heat treat, plating and other specialty services which may be required.

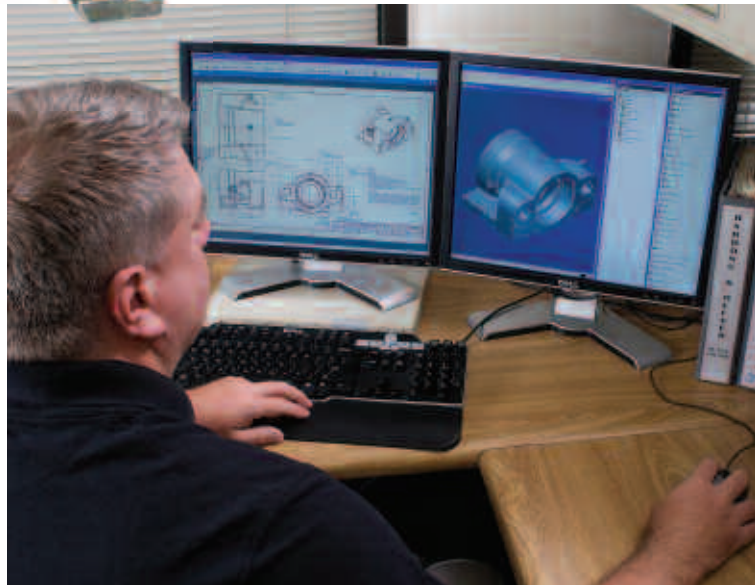
This combination of facilities and location blend very nicely with a highly trained and talented work force. We offer you a very specialized and experienced resource for your contract machining needs.



*“If we can suggest ways to process your parts faster, and lower the cost to you, we will.”*

## Doing the best job for you.

We have the experience to evaluate drawings—not only for a cost and delivery quotation—but with effective suggestions on production processes, machine capabilities and manufacturing engineering help, if required.



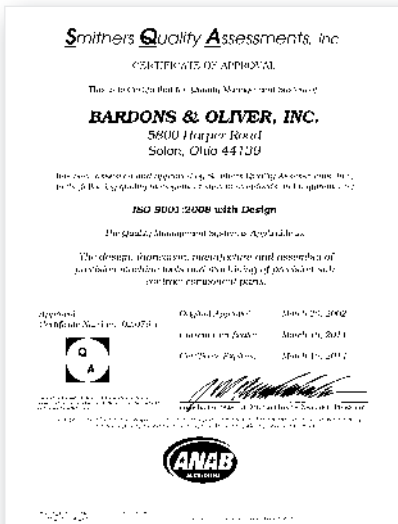
## Total quality commitment.

Quality begins with a commitment to excel. To facilitate this goal, we constantly review our quality policy with machine operators, production and management.

As an employee-owned company, our 120 skilled owners are dedicated to total quality, competitive prices and responsive customer service.



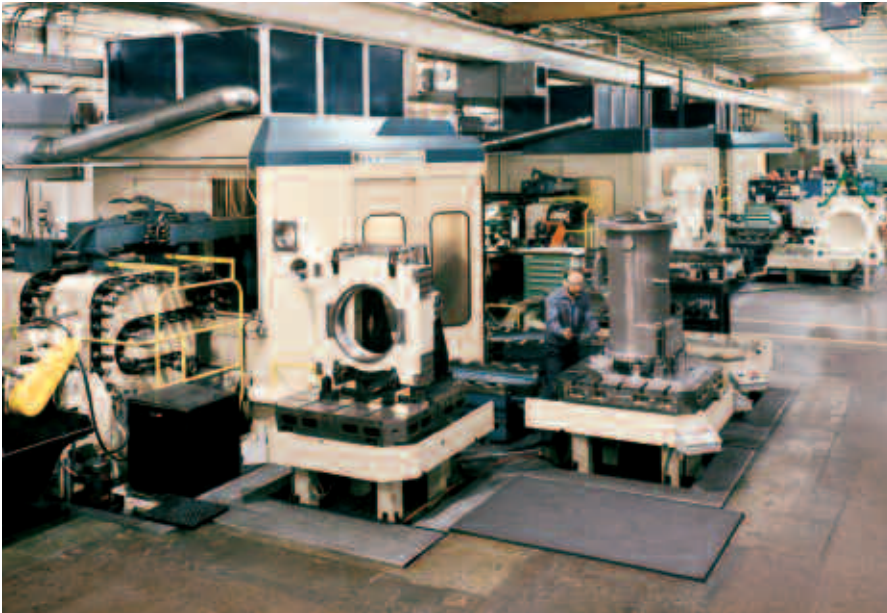
*“We believe everyone in the company is responsible for quality—all the time.”*



## ISO Certified Since 2002

Bardons & Oliver takes quality seriously. As a result, our Quality Management System has been ISO-approved (ISO 9001:2000 with Design) since 2002.

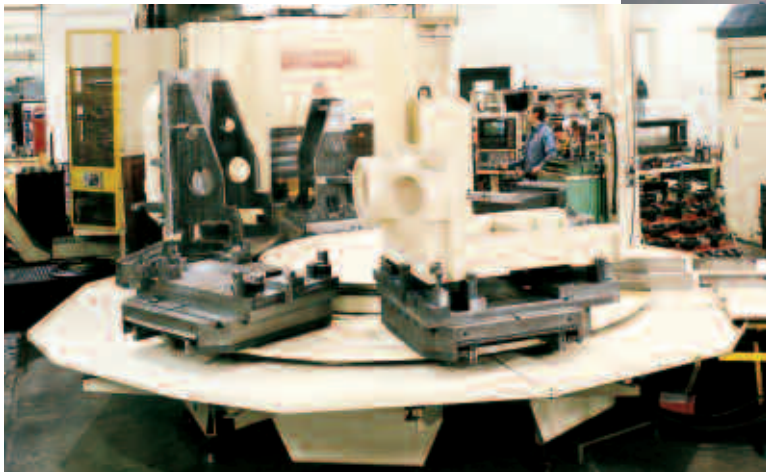
# The capability to do your job right, every time.



## On-time production.

Production personnel utilize a computerized management system to maximize productivity on your project. This is done by entering time, material requirements and complete sequence of operations, or a router, for each part. Routing data is reviewed daily with critical path charts. Adjustments can be made to shift production among various work centers to maintain delivery schedules.

*Multi-pallet machining centers with high-capacity tool changers handle complex precision parts, such as housings, gear boxes and machine tool slides, up to a 7-foot cube and 14,000 pounds.*



## Flexible capacity.

A major advantage for our customers is the variety of CNC multiple axis machines available for your job. The ability to repeat jobs with the same CNC accuracy gives you a source that will produce on demand or according to a just-in-time schedule.

Our work force has the capability to work flexible hours and shift from machine to machine if necessary to answer your delivery requirements.



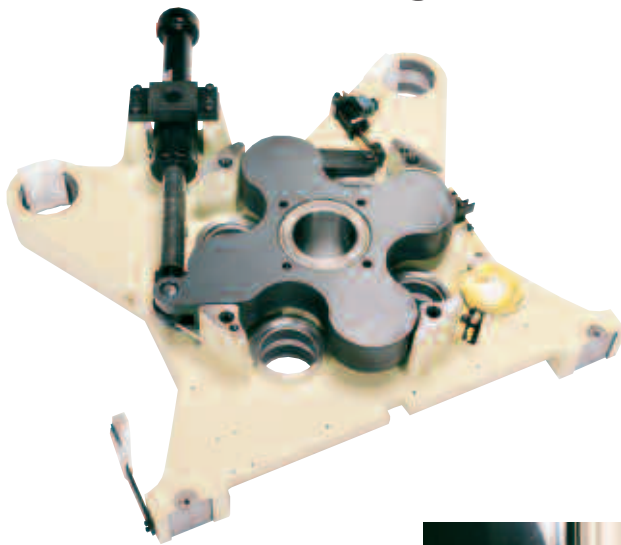
*Horizontal turning capacity:  
up to 36" diameter and  
144" long.*



*Vertical turning  
capacity from 30" to  
84" diameter.*



# We put it all together for you.



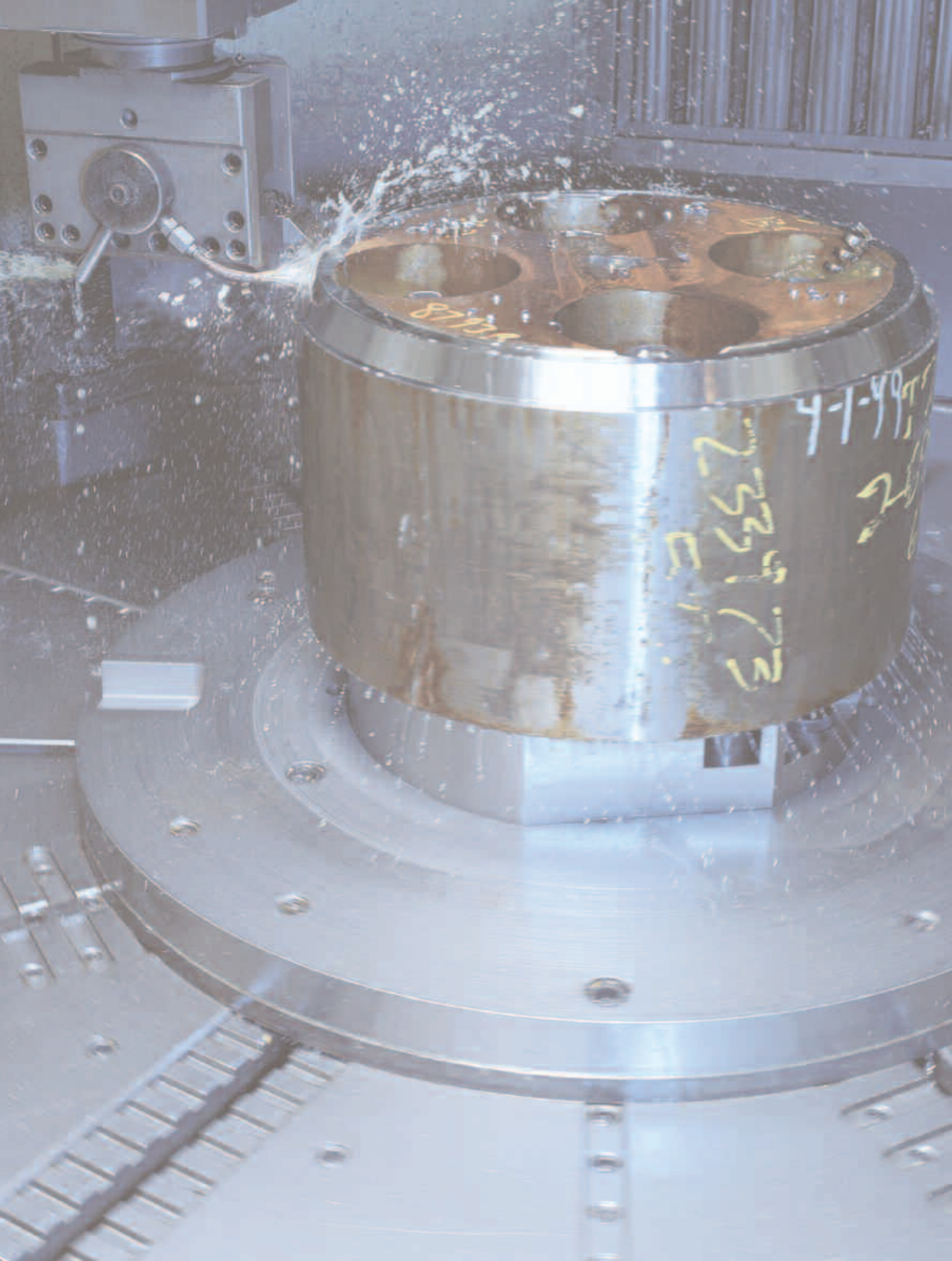
Assembly of Simple  
Components to Complete  
Machines

## Assembly.

Bardons & Oliver offers assembly of simple components to complete machines. Two assembly bays equipped with 14-ton capacity overhead cranes offer a clean, well-defined work area for assembly of your parts, separate from machining operations.

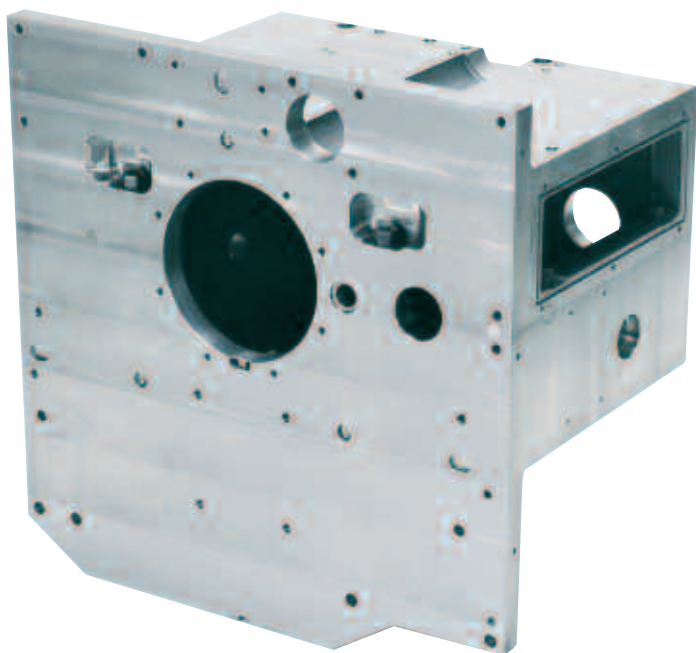
For over sixty years, we have been assembling various components and complete machines for a variety of industries, including plastic molding, printing, machine tools, tire, fluid power products, transportation, power transmission and aerospace.







# Put our capabilities to work for you.



Located in this pocket is our current list of machines and services available to you. Please come and visit our plant, talk to us and allow us to show you how we can contribute to your success—whether single part production, complete sub-assemblies or an entire machine.

While our shop is equipped with state-of-the-art equipment, it is our employees who make the difference. As owners, we have a vested interest in doing things right and serving your needs.

We have the commitment: do it right—do whatever it takes.



# Make us your reliable outsource.



- Machining of complex, precision parts up to a 7-foot cube and 14,000 pounds
- Vertical turning capacity from 30" to 84" diameter
- Horizontal turning capacity up to 36" diameter and 144" long
- Complete inspection and assembly services

*"We have the commitment  
backed by the investment:  
do it right – do whatever it takes."*

## **BARDONS & OLIVER**

Over 120 years of excellence.

### **Bardons & Oliver, Inc.**

5800 Harper Road • Solon, Ohio 44139

(440) 498-5800 • Fax: (440) 498-2001

E-Mail: [information@bardonsoliver.com](mailto:information@bardonsoliver.com)

[www.bardonsoliver.biz](http://www.bardonsoliver.biz)

*Bardons & Oliver is an employee-owned company.*



*Grinding operations include OD, ID and surface.*